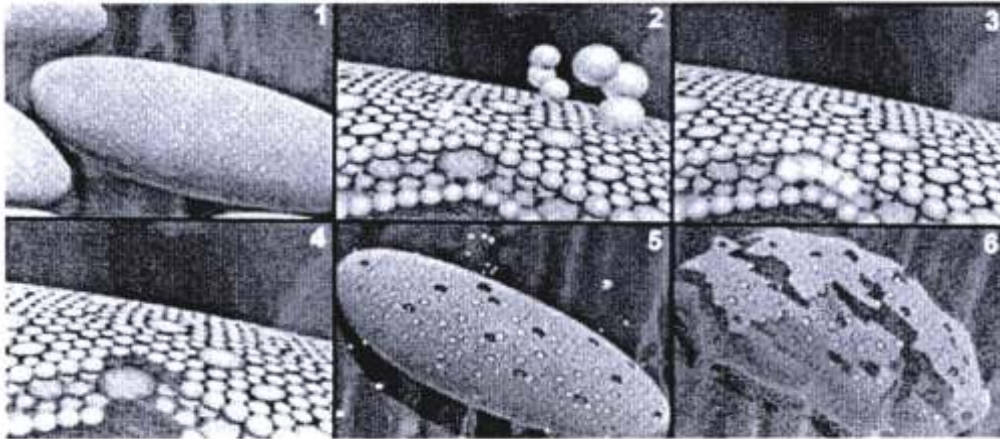
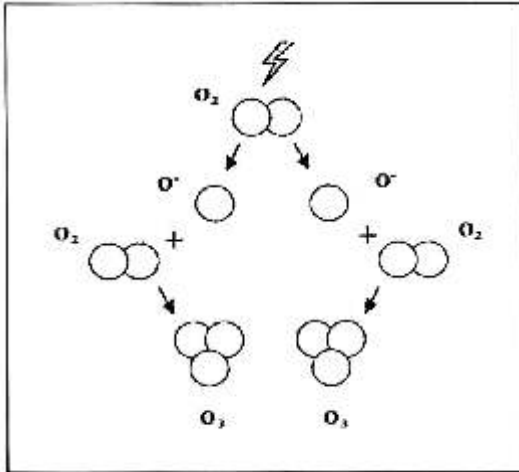




μ : 1612

O μ : 5-20 PPB (0.005 – 0.02 PPM)

μ μ



- 1.
2. μ μ
3. μ
- 4.
5. μ (μ μ Lysing).
- 6.

- μ 99,99%
- 25 μ : OCL (Hypochlorous O)
- 5000 CL ()
- NH₂CL (Chloramine).



